

# Sports Pavilions

2016 Edition



Disability  
Sport NI

[www.dsni.co.uk](http://www.dsni.co.uk)

## Overview

Disability Sport NI considers a Sports Pavilion to be: **a building which contains only limited changing facilities and toilet facilities; which may, or may not, include an additional meeting/committee room and is without a sports hall or fitness suite.**

A building containing facilities in addition to those outlined above is considered to be a **Sports Facility**. As such, reference should be made to the Recommended Standards within Disability Sport NI Guide 1: Accessible Sports Facilities Design Guidelines (2016 Edition) and Disability Sport NI Guide 2: Accessible Sports Facilities Management Guidelines (2016 Edition).

## Recommended Standards

### External Pathways

Provide a firm, level pathway 1800mm wide leading to the pavilion entrance and to any playing surface/viewing space.

Differentiate paths from vehicular routes.

### Parking

As site specific factors may be applicable, consult Disability Sport NI for required number of accessible bays. A minimum 1 no. bay will always be required.

The design of accessible parking bays should be in accordance with Disability Sport NI Guide 1: Accessible Sports Facilities Design Guidelines (2016 Edition), **Section 1.2.2** Design of accessible parking bays.

Vertical signs are required at the head of each bay. A dropped kerbline should only be installed along the entire length of an accessible parking zone where it will be complemented by this signage and where it does not present a hazard to pedestrians.

**Entrance Door** (including external door(s) leading from changing rooms and toilets)

Minimum width 1000mm, except for sports pavilions which serve wheelchair tennis; whereby entrance door width should be increased to 1200mm.

## Reception

Where a reception counter is provided, it should have:

- A section maximum 760mm high.
- Induction loop provision (could be portable); and symbol signage displayed.
- A rest seat and wheelchair space available adjacent.

## Corridors

Minimum corridor width of 1500mm, except for sports pavilions which serve wheelchair tennis; whereby corridor width should be increased to 2000mm.

## Internal Doors

Minimum 875mm effective clear opening width, except for sports pavilions which serve wheelchair tennis; whereby the minimum effective clear opening width should be increased to 1200mm.

## Vertical Circulation (Stairs, Internal Ramps, Lifts)

Where stairs or internal ramps are required in a sports pavilion they should be designed in accordance with Technical Booklet H of the Building Regulations NI 2012. For lifts:

Lift door 800mm wide and lift car size 1100mm deep by 1400mm wide to accommodate one wheelchair user, except for sports pavilions which serve wheelchair tennis; whereby a lift door 1100mm wide and lift car size 1400mm deep by 2000mm wide is required.

## Toilets/Changing Facilities

Provide 1 no. self-contained wheelchair accessible WC unit in accordance with Disability Sport NI Guide 1: Accessible Sports Facilities Design Guidelines (2016 Edition), **Section 4.1.1.2** Unisex wheelchair accessible WC unit.

Provide an ambulant accessible cubicle in male and female toilet blocks. Provide lowered wash hand basin in male and female toilet blocks and lowered urinal in male toilet blocks, with associated contrasting grabrails. An enlarged cubicle may be required where there are more than four cubicles in male and female toilet blocks (urinal and wash hand basin designed accordingly to facilitate wheelchair users in these blocks).

Provide 1 no. self-contained unisex accessible changing/shower/WC room in accordance with Disability Sport NI Guide 1: Accessible Sports Facilities Design Guidelines (2016 Edition), **Section 4.4.2** Self-contained unisex accessible changing/shower/WC rooms. This may be an acceptable alternative to an incorporated changing space in the main/team changing

area(s). Where provided, the unisex room should be located within the sports pavilion, close to the main/team changing area(s).

Provide accessible locker provision (full height and wheelchair accessible lockers) outside and immediately adjacent to the accessible changing facility.

Consideration should be given to wheelchair accessible incorporated shower and/or changing facilities within the main changing area(s), over and above the required self-contained unisex room provision.

Where an incorporated changing facility is provided in main inclusive changing areas, variations to the design specifications may be acceptable.

Where an incorporated shower facility is provided in main inclusive shower areas, variations to the design specifications may be acceptable.

### **Public Telephone**

Where a public telephone is provided, it should be located close to visitor information areas, positioned at an accessible height and fitted with an induction coupler that is identified using symbol signage.

### **Outlets, Switches and Controls**

Outlets, switches and controls should be in accordance with Technical Booklet R of the Building Regulations NI 2012. See Disability Sport NI Guide 1: Accessible Sports Facilities Design Guidelines (2016 Edition), **Figure 12** Outlets, Switches and Controls.

Controls for power operated doors should be located between 750mm and 1000mm above floor level and not less than 1400mm from the leading edge of the door when in the fully open position.

Emergency assistance alarms should have a red coloured pull cord with two red coloured 50mm diameter bangles. The lower bangle should be set at a height of 100mm above floor level and the upper bangle should be located not less than 800mm and not more than 1000mm above floor level. Low level alarm conduits are also useful as an addition.

## Lighting

Provide good natural and artificial lighting levels.

Avoid glare and reflection.

## Visual Contrast

Visual contrast is important in sports pavilions to assist partially sighted people.

Finishes that contrast with each other in terms of colour and tone should be used to differentiate between floors, walls, doors and ceilings.

Doors and their frames should contrast in colour with the surrounding wall. Skirting should contrast visually with the floor finish, but may match or be similar in colour and tone to the wall surface.

Outlets, switches and controls should be distinguishable from the surrounding wall.

Grabrails should contrast visually with the surrounding wall surface.

## Floor Finishes

Provide slip resistant flooring, including within toilet and wet areas.

Where matwells are provided the mat surface should be fixed and flush with the surrounding floor surface. Loose mats should be avoided.

Avoid high gloss finishes and patterns; and ensure carpet is shallow pile.

## Facilities for Assistance Dogs

Guidance is provided within Disability Sport NI Guide 1: Accessible Sports Facilities Design Guidelines (2016 Edition), **Section 4.14** Facilities for Assistance Dogs, however discuss with Guide Dogs NI to establish an acceptable solution re: internal provision and an external spending area provision on site - as a minimum it may be possible to agree a dedicated area (not necessarily enclosed), including staff support in terms of visitor awareness and maintenance.

## Signage

Accessible signage is required for sports pavilions. This should be in accordance with Disability Sport NI Guide 1: Accessible Sports Facilities Design Guidelines (2016 Edition), **Section 6.1** Signage and Wayfinding.

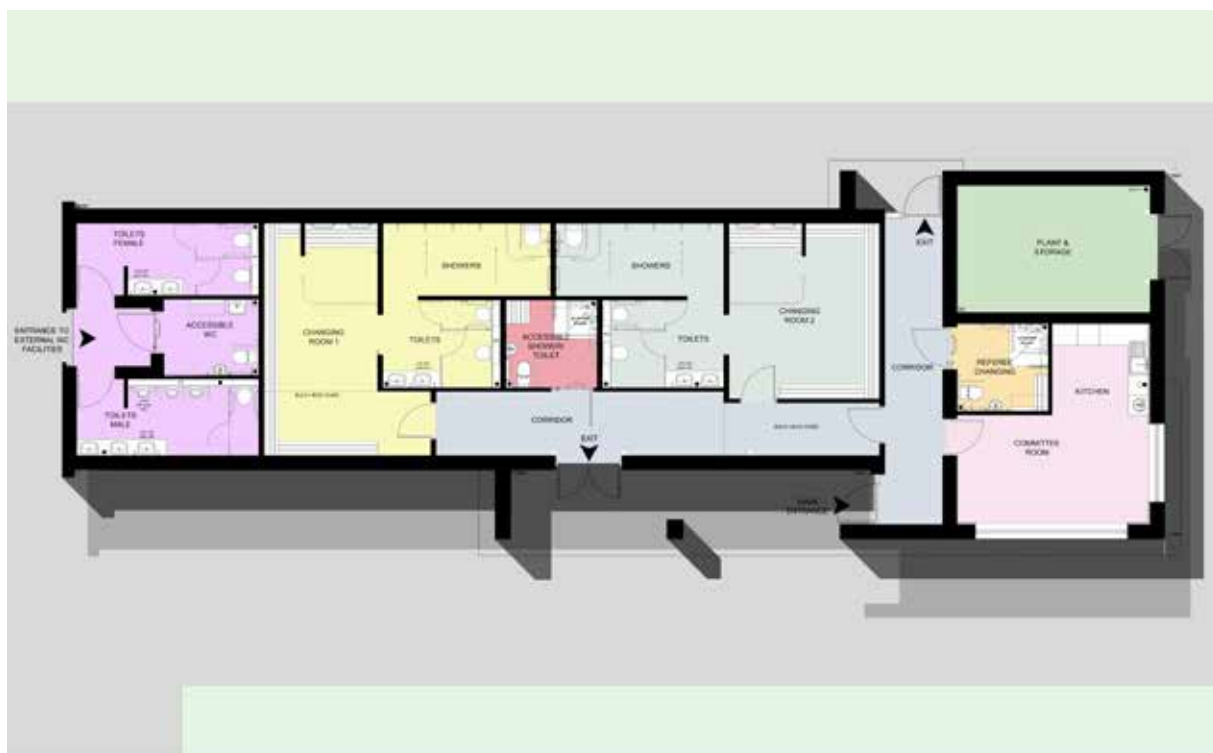
## Alarm Systems

Fire alarm systems should be audible and visual (i.e. flashing beacons), including within areas where visitors and staff may be unaccompanied.

Emergency assistance alarms should be fitted in all accessible toilets, changing and shower areas/zones.

## Sports Pavilions - A Case Study

The following example illustrates provisions which are considered by Disability Sport NI to comprise a Sports Pavilion:



Spafield Football Pavilion, Holywood - (image courtesy of URS Infrastructure & Environment UK Limited)

## Useful Resources

- ▶ Disability Sport NI Guide 1: Accessible Sports Facilities Design Guidelines (2016 Edition).
- ▶ Disability Sport NI Guide 2: Accessible Sports Facilities Management Guidelines (2016 Edition).

**Note:** consultation with Disability Sport NI is recommended in relation to specific design requirements for Sports Pavilions.

**Disability Sport NI**

Unit F, Curlew Pavilion  
Portside Business Park  
189 Airport Road West  
Belfast BT3 9ED

**Telephone:** 028 9046 9925

**Textphone:** 028 9046 3494

**Email:** [email@dsni.co.uk](mailto:email@dsni.co.uk)

[www.dsni.co.uk](http://www.dsni.co.uk)



Supported by

